



# Homed:In

18 Station Road, Southwater, RH13 9HQ



## Walmer Close

Southwater, Horsham, RH13 9XY

Offers Over £585,000



# Walmer Close



## Description

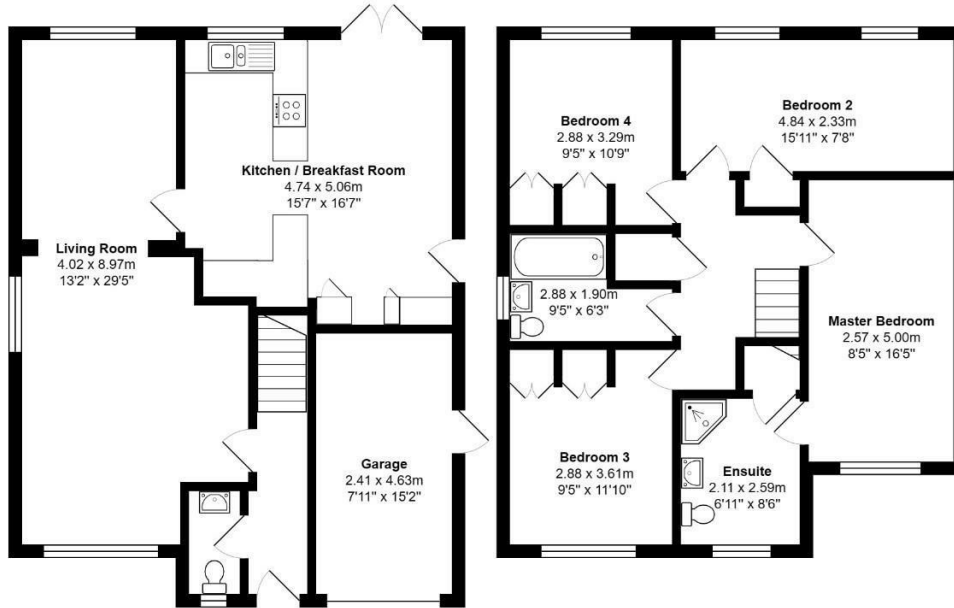
**\*UNDER OFFER AFTER 2 DAYS OF MARKETING, MORE HOMES NEEDED FOR BUYERS WHO MISSED OUT\***  
This brilliant corner plot home provides balanced accommodation and 4 good sized bedrooms for the growing family. VIDEO TOUR in tab.

- Excellent Detached Home
- Wide Open Living, Dining and Kitchen Spaces
- CHECK OUT THE VIDEO TOUR AT OUR WEBSITE
- Close to Country Park and Excellent Schooling
- A Must View Option
- Corner Plot in Cul de Sac Road
- Not Overlooked South Facing Plot
- Master Bedroom with Large En-suite
- 10 Minutes Drive into Horsham





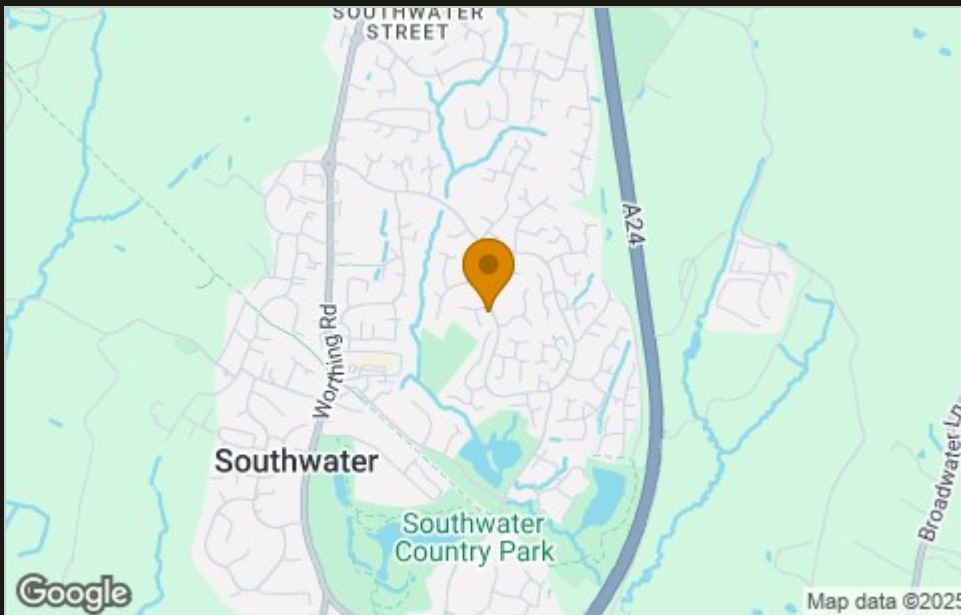
## Floor Plan



Total Area: 139.3 m<sup>2</sup> ... 1500 ft<sup>2</sup> (Incl Garage)

All measurements are approximate and for display purposes only.  
Copyright 2023. All rights reserved

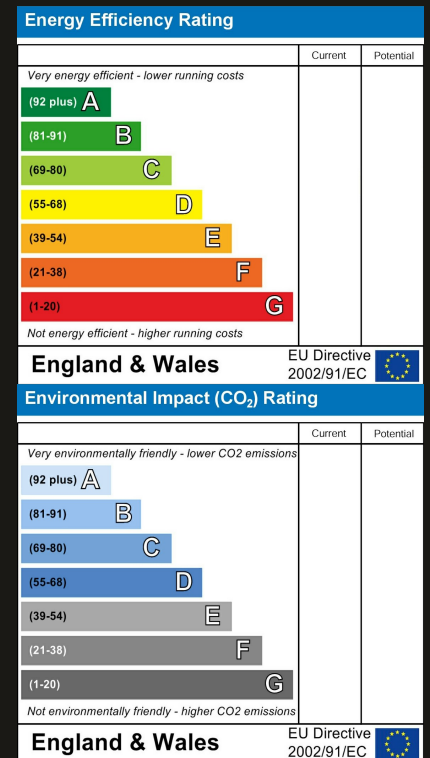
## Area Map



## Viewing

Please contact our Horsham Office on 01403 597595 if you wish to arrange a viewing appointment for this property or require further information.

## Energy Efficiency Graph



These particulars, whilst believed to be accurate are set out as a general outline only for guidance and do not constitute any part of an offer or contract. Intending purchasers should not rely on them as statements of representation of fact, but must satisfy themselves by inspection or otherwise as to their accuracy. No person in this firm's employment has the authority to make or give any representation or warranty in respect of the property.

To **GET A FREE VALUATION** Call us on: **01403 597595**  
or email us at: [info@homedin.co.uk](mailto:info@homedin.co.uk)